



Please ensure the Power outlet is switched off before any of the steps below are attempted!

Connect AC power adaptor with the power cable. Connect power supply into the back of the 9V socket at the back of the charging dock. Plug other end of the cable into electrical outlet. Switch on the power socket (if applicable).

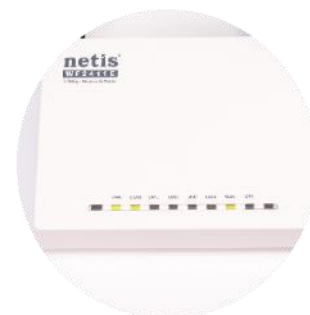
NO CHARGING DOCK?

Connect the 'USB type B' cable to the terminal.

Connect the other end of the cable into the USB power plug into electrical outlet. Switch on the power socket (if applicable)



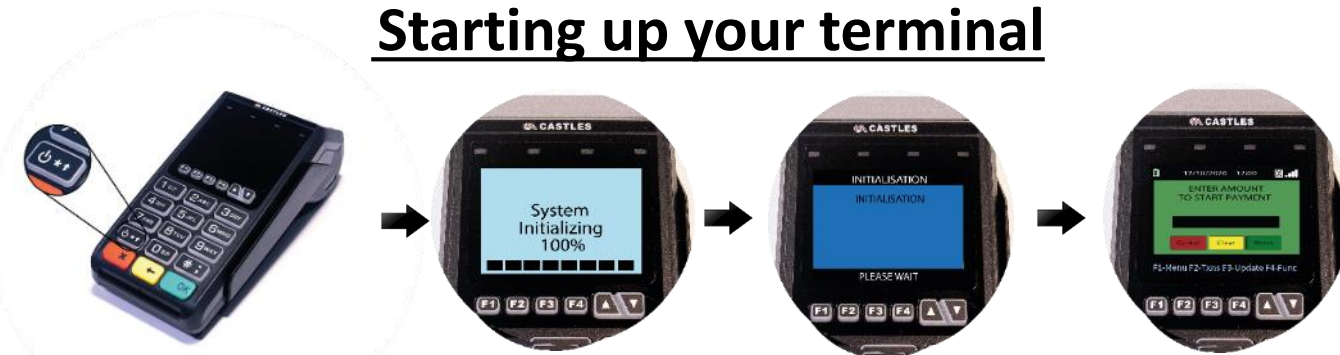
Router installation (optional for V3M2 Wi-Fi)



Plug the LAN cable into the BLUE 'WAN' socket on the the Netis router. Plug the other end of the LAN cable into the internet source (your internet router or Network socket)

Plug the power supply into the power socket on the Netis router, connect the other end of the cable into the power socket. When the 3 LED are lit (WAN, WLAN and PWR) - you can switch your Wi-Fi terminal on.

Starting up your terminal



Press and hold the power button (above the red key) until the screen lights up. The terminal will power on and initialise for use

When 'Enter amount' message is displayed – the terminal is ready to use!



'Cardholder Not - Present' transaction



Starting from 'Enter amount screen:

Key in transaction amount and press green 'OK' button

From 'Insert card' screen, key in the long card number and press green 'OK' button

If prompted, key in the card expiration date in 'MMYY' format and press the green 'OK' button on the terminal keypad

If prompted, press '1' on the terminal keypad to enter the CVV2 code (last 3 digits on the back of the card)

If prompted, key in the address number (numeric only) press green 'OK'

If prompted, key in the postcode (numbers only) press green 'OK'

The terminal will complete the transaction and print the receipt

'End of the day' report



Starting from 'Enter amount screen:

From underneath the screen press 'F1' button

Select 'Batch' by pressing no 2 on the terminal keypad

Select 'Settle' by pressing no 1 on the terminal keypad

If prompted, key in 4 digits password (0000 by default) and press green 'OK' button on the terminal keypad

If prompted, select 'All host' by pressing 0 on the keypad, - the terminal will print out end of the day report after connecting to the bank

Please note:

All terminals are pre-configured for daily auto-batch between 22:00 and 23.59

To disable auto-batch feature please contact the technical support helpdesk.

Who should I contact?



ACQUIRER (Bank)

No funds are coming to my business account

There is a discrepancy between funds I have received and what I was expecting

I need to change my bank details

ISO (Lease Company)

I want to order new or additional equipment

I need to add/remove a functionality on the terminal

I have a question about my contract (fees, charges, length, etc.)

I need to update my details (address, contact, etc.)

TECHNICAL SUPPORT

Training (how to use the terminal)

Technical issues (terminal is not functioning properly)

Tracking and delivery queries